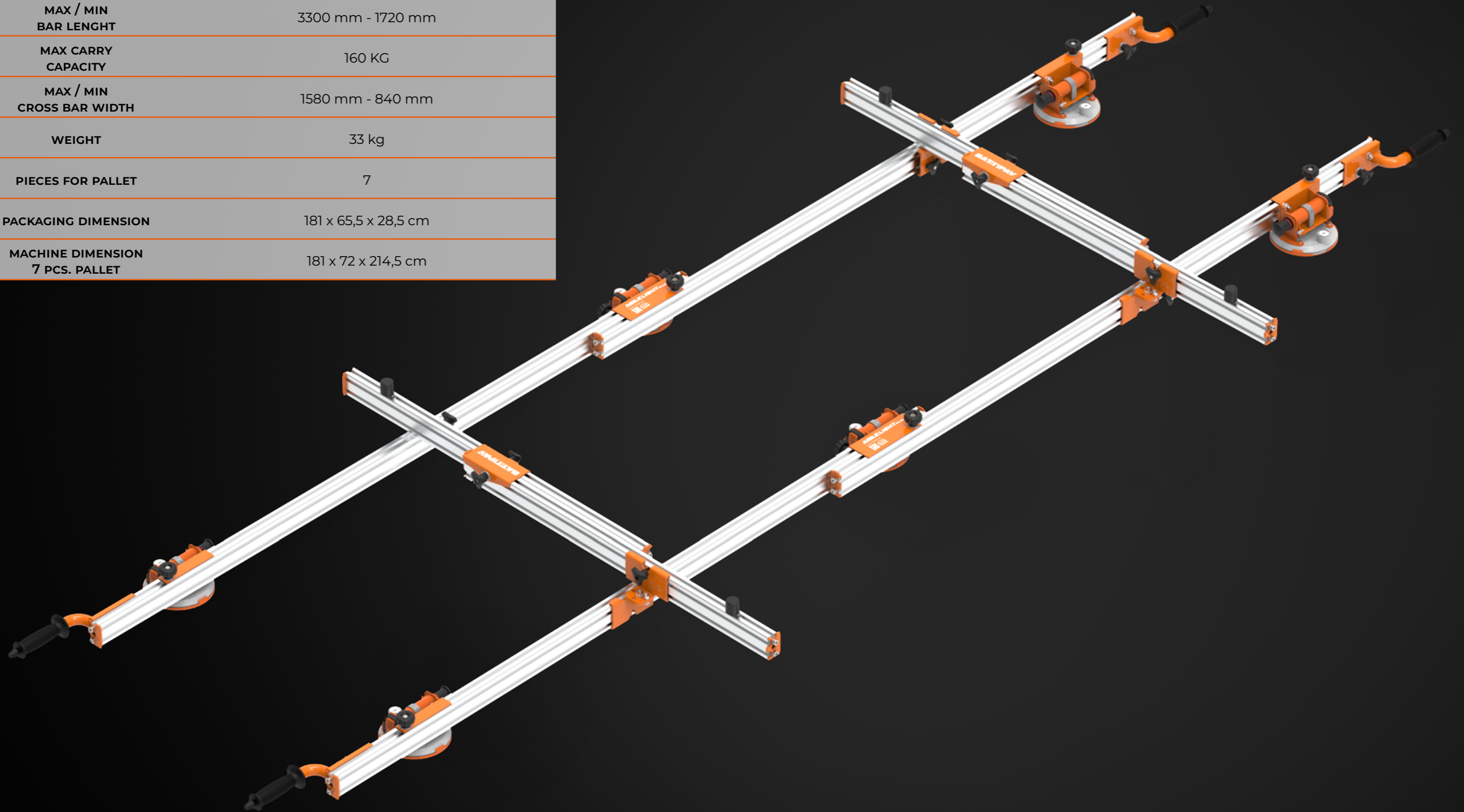
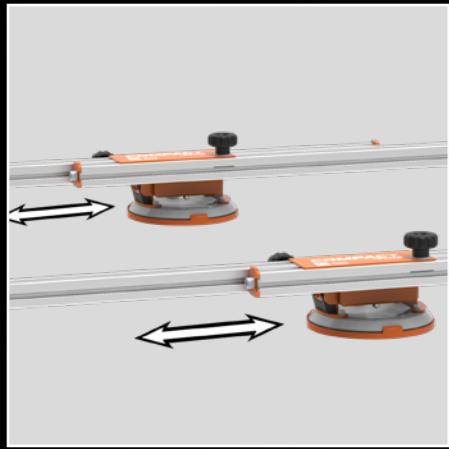


# AGILE LIGHT<sub>plus</sub>

## AGILE LIGHT PLUS (Art. 11006/1)

MAX / MIN BAR LENGTH	3300 mm - 1720 mm
MAX CARRY CAPACITY	160 KG
MAX / MIN CROSS BAR WIDTH	1580 mm - 840 mm
WEIGHT	33 kg
PIECES FOR PALLET	7
PACKAGING DIMENSION	181 x 65,5 x 28,5 cm
MACHINE DIMENSION 7 PCS. PALLET	181 x 72 x 214,5 cm





**BARS**

Advanced mechanism for telescopic bar.



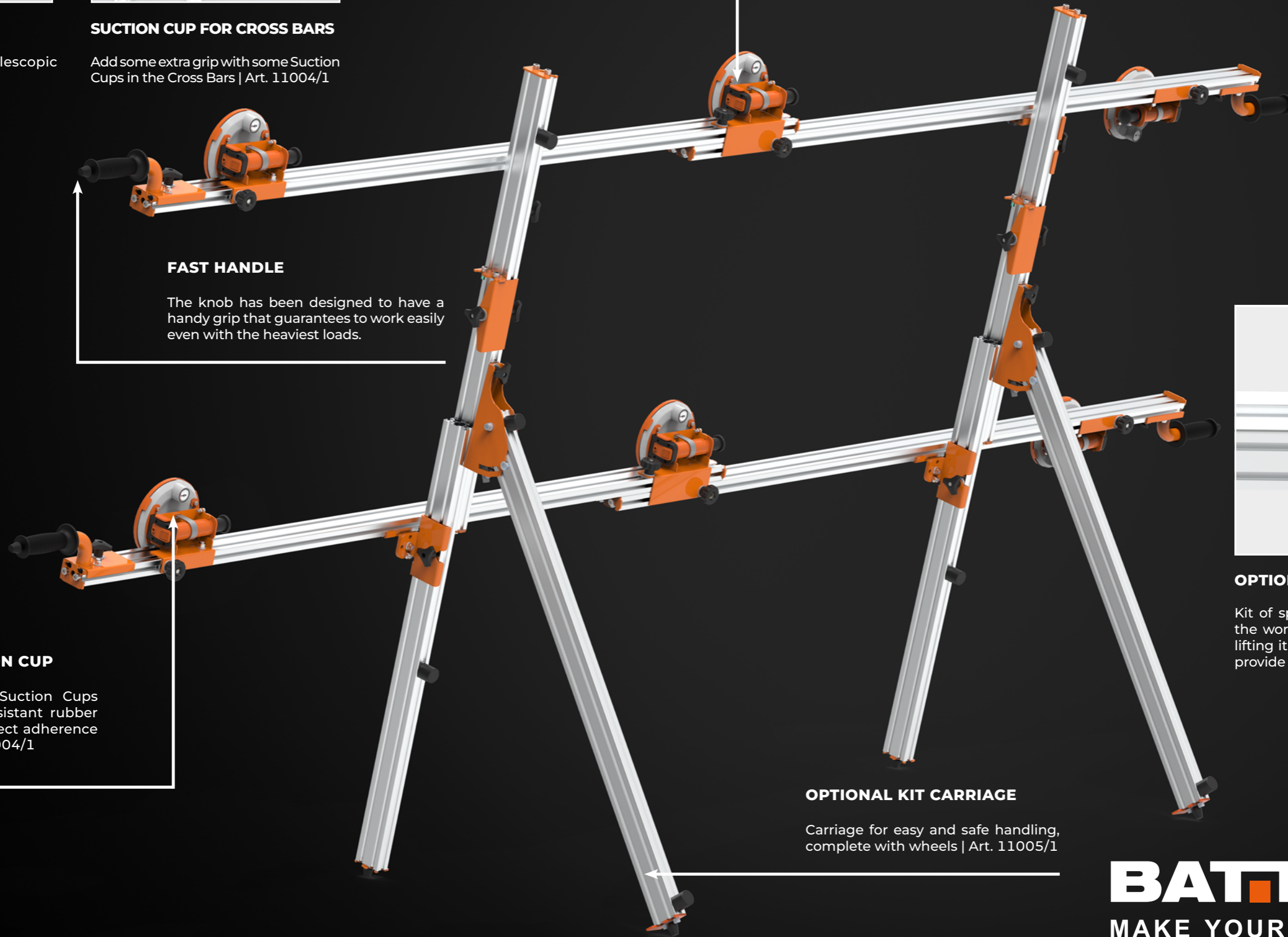
**SUCTION CUP FOR CROSS BARS**

Add some extra grip with some Suction Cups in the Cross Bars | Art. 11004/1



**COMPATIBLE WITH PUMPING KIT**

Agile Light Plus is compatible with: Pumping Kit Battipav (Art. 11903).

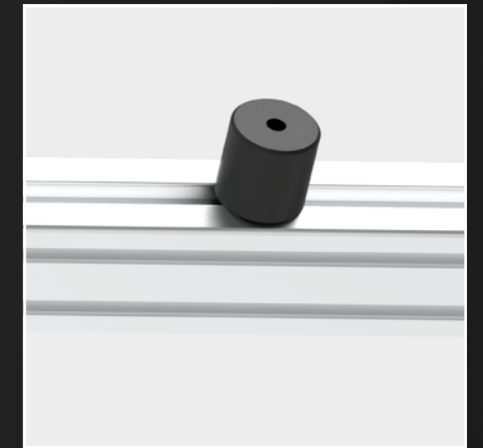


**FAST HANDLE**

The knob has been designed to have a handy grip that guarantees to work easily even with the heaviest loads.

**PROFESSIONAL SUCTION CUP**

High quality professional Suction Cups with vacuum indicator. Resistant rubber with special design for perfect adherence on rough surfaces. | Art. 11004/1



**OPTIONAL KIT SPACER**

Kit of spacer caps that, attached to the workbench, support the slab by lifting it off the aluminum profiles to provide stable support. Art. SP11026

**OPTIONAL KIT CARRIAGE**

Carriage for easy and safe handling, complete with wheels | Art. 11005/1

**BATTIPAV**<sup>TM</sup>  
MAKE YOUR ITALIAN CUT