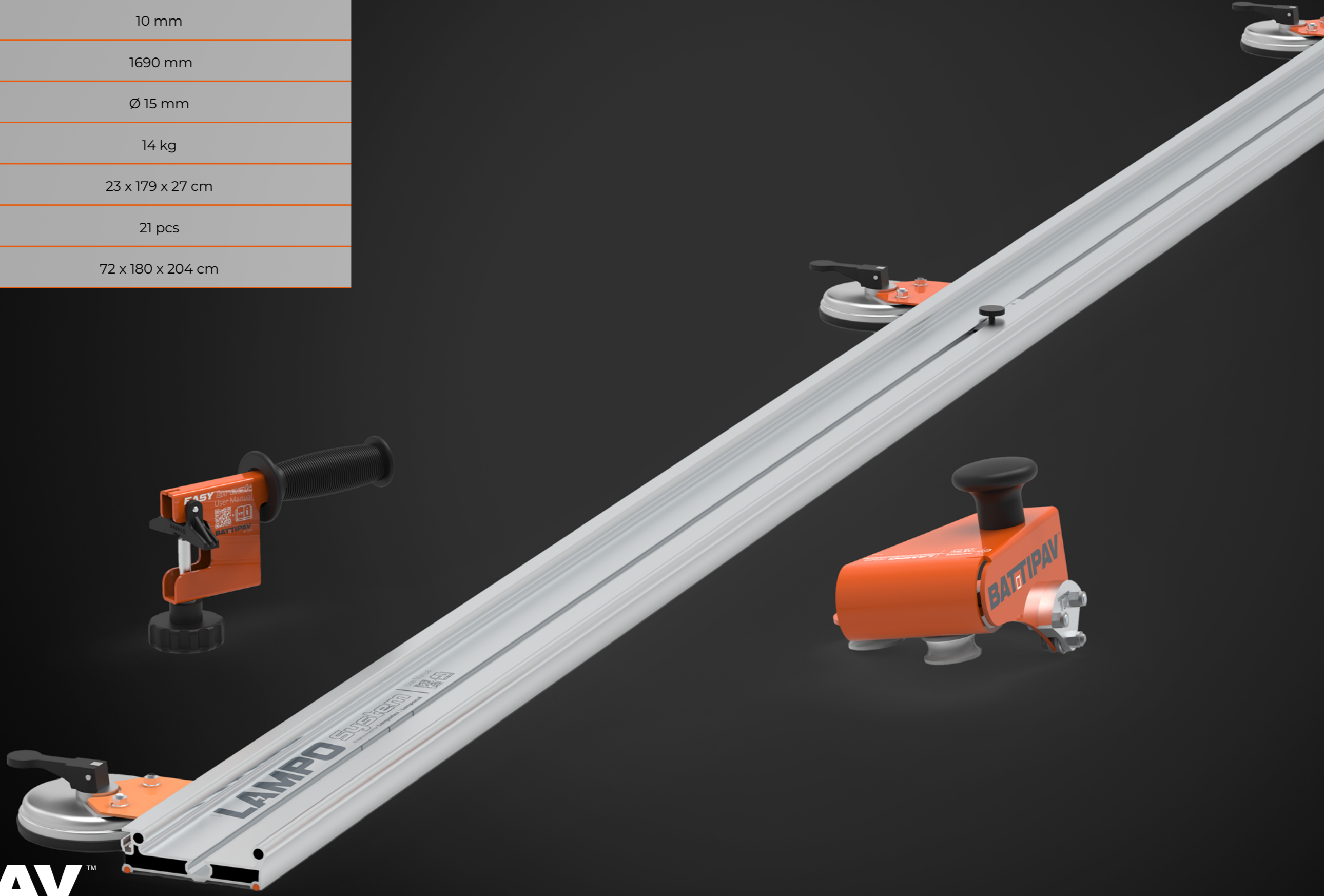
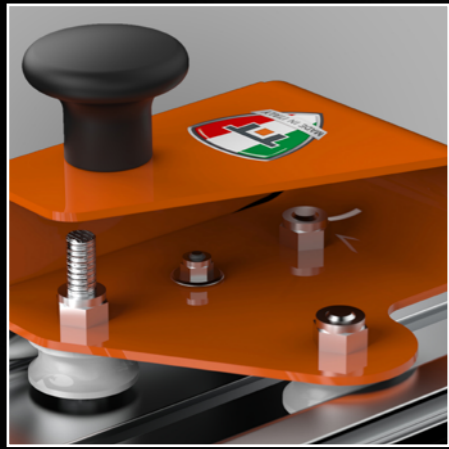


# LAMPO cut

LAMPO CUT (Art. 11101/1)	
MAX STRAIGHT CUTTING LENGTH	3200 mm
CUTTING THICKNESS WITH PLIERS (ART. 11301)	10 mm
LENGHT OF THE SINGLE TRACK	1690 mm
WHEEL	Ø 15 mm
WEIGHT	14 kg
PACKAGING DIMENSION	23 x 179 x 27 cm
PIECES FOR PALLET	21 pcs
FULL PALLET DIMENSION	72 x 180 x 204 cm





### HANDLE DESIGN

A studied handle designed to comfortably cut every kind of material.



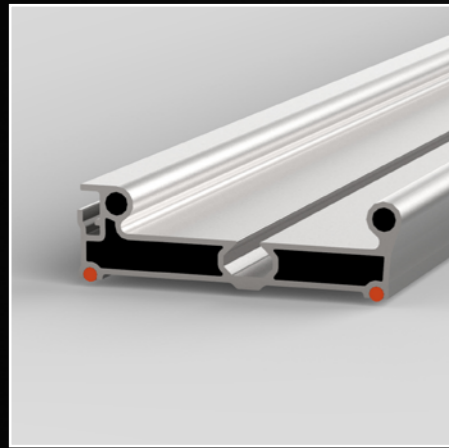
### CONNECTIONS

With the Joint (art. 11204) it is possible to easily connect two or more products.



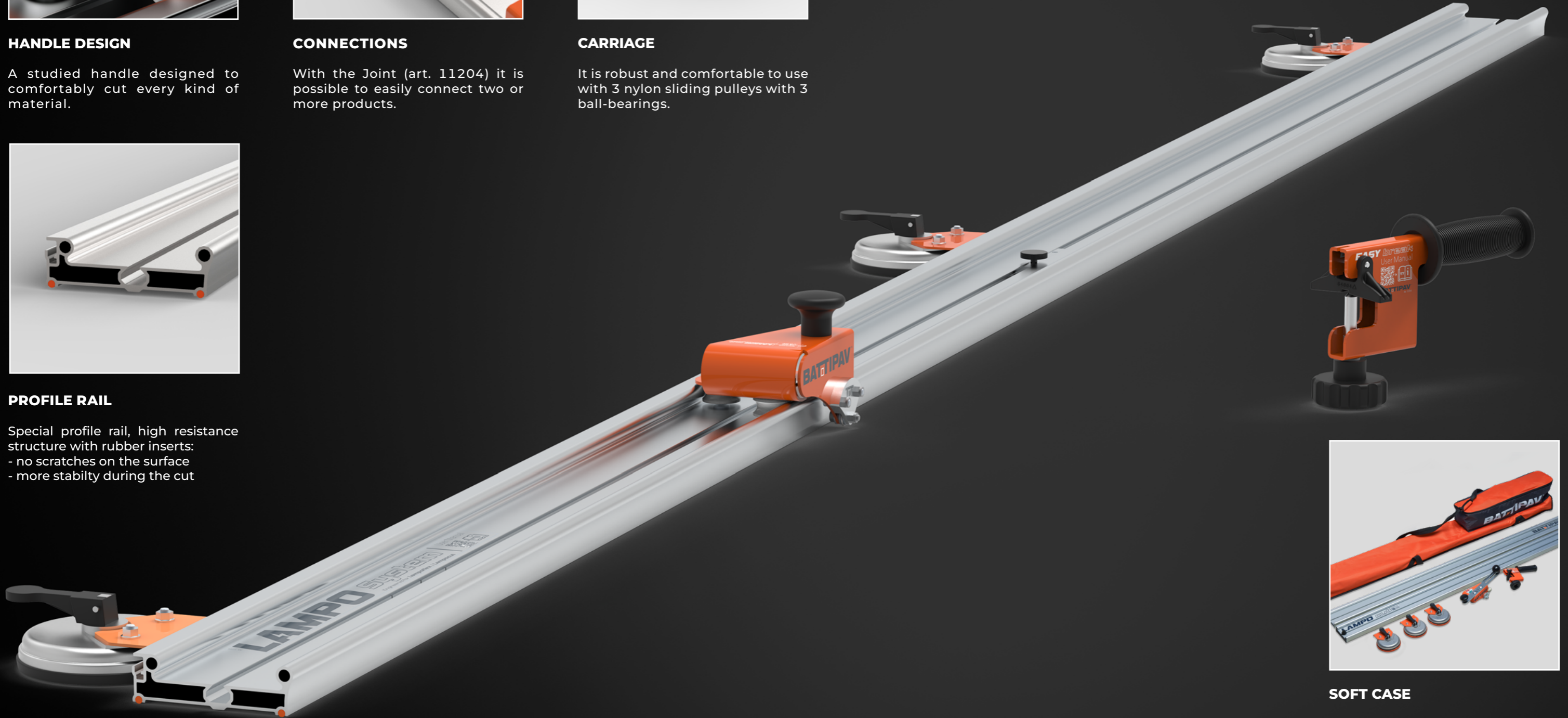
### CARRIAGE

It is robust and comfortable to use with 3 nylon sliding pulleys with 3 ball-bearings.



### PROFILE RAIL

Special profile rail, high resistance structure with rubber inserts:  
- no scratches on the surface  
- more stability during the cut



### SOFT CASE

Supplied with a soft case with, thanks to a pair of wheels, makes transportation easy and safe.

**BATTIPAV**<sup>TM</sup>  
MAKE YOUR ITALIAN CUT